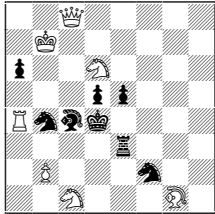




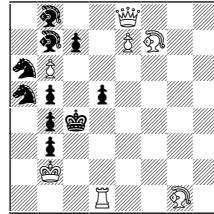
Accademia Scacchi Milano  
II Torneo di Soluzione problemi - Gara 7  
Soluzioni



**1. Edmond Barthelemy**  
*Bulletin de la FFE - 1936*

1. ♖c7! (5p) > 2. ♖b6#  
1... ♖e4 2. ♖f5#  
1... ♖fd3 2. ♖e2 #  
1... ♖bd3 2. ♖b3#  
1... e4 2. ♖f5#

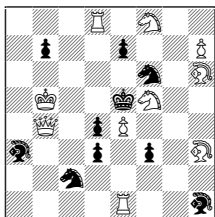
#2 (7+8)



**2. Isabella Keller**  
*Shachmaty v SSSR - 1958*

1. ♖c8! (5p) > 2. ♖g4#  
1... ♖c6 2. ♖xd5#  
1... ♖c5 2. ♖d4#  
1... ♖xc8 2. ♖xd5#  
1... c5 2. ♖d4 #  
1... c6 2. ♖xd5#

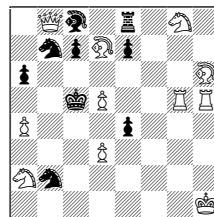
#2 (7+10)



**3. Nikola Stolev**  
*Olympic Tourney 2010 - 3. M.O.*

1. ♖e3! (5p) > 2. ♖c4#  
1... ♖xe1 (xe3) 2. ♖xd4#  
1... dxe3 2. ♖g6#  
1... ♖xe4 2. ♖xc2#  
1... ♖xe4 2. ♖d7#  
1... ♖f6-- 2. ♖g4#

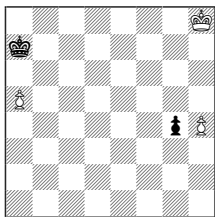
#2 (10+10)



**4. Viktor Kapusta**  
*Olympic Tourney 2010 - 5° premio*

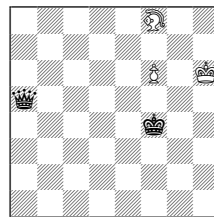
1. ♖g3! (1p) > 2. ♖xc7+ ♖d4 3. ♖c3#  
1... ♖b6 2. ♖e3+ (1p)  
2... ♖a5 3. ♖c7# 2... c5 3. d5xc6 ep.#  
1... ♖d6 2. ♖f4+ (1p)  
2... ♖xd7 3. ♖xc7# 2... ♖c5 3. ♖a7#  
2... e5 3. d5xe6 ep.#  
1... ♖d4 2. ♖g7+ (1p)  
2... ♖c5 3. ♖xc7# 2... e5 3. d5xe6 ep#  
1... e5 2. d5xe6 ep.+ (1p)  
2... ♖b6 3. a5# 2... ♖d6 3. ♖f4#  
2... ♖d4 3. ♖g7#

#3 (11+9)



- 5. Pal Farago**  
1937  
1. a6! (3p) g3 2. h5 g2  
3. h6 g1 ♖ 4. h7 (2p) =  
1. h5? ♖a6! 2. h6 g3  
3. h7 g2 4. Rg7 g1 ♖+  
5. ♖f8 ♖d4 6. ♖g8 ♖g4+  
6. ♖f8 ♖f5+ 7. ♖g8 ♖g6+  
7. ♖h8 ♖b5!! 8. a6 ♖f7 9. a7 ♖f8#

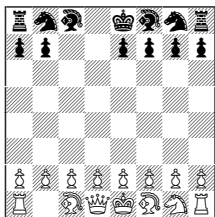
= (3+2)



**6. Leonid Kubbel**  
1923

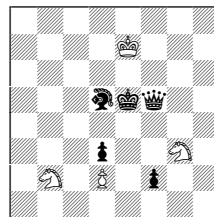
1. ♖d6+ (1p) ♖f5  
2. f7 (1p) ♖d2+  
3. ♖h7 (1p) ♖xd6  
4. f8=♖+ (2p) ==

= (3+2)



- 7. mb**  
1. ♖c3 d5 2. ♖xd5 ♖d7  
3. ♖xc7 ♖e8 4. ♖xe8 ♖xe8  
(5p)

SPG4.0 (15+13)



**8. Georg Fuhendorf**  
*Schwalbe 1929 - 1° premio*

1. f1=♖ ♖xd3+  
2. ♖xd3 ♖e2  
3. ♖de4 d4#  
(5p)

h#3 una soluzione (4+5)